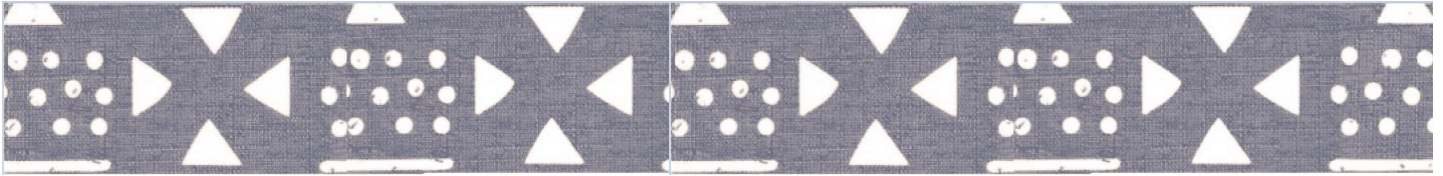


FY24

Post-Shipment Feedback Survey



Respondents at a Glance

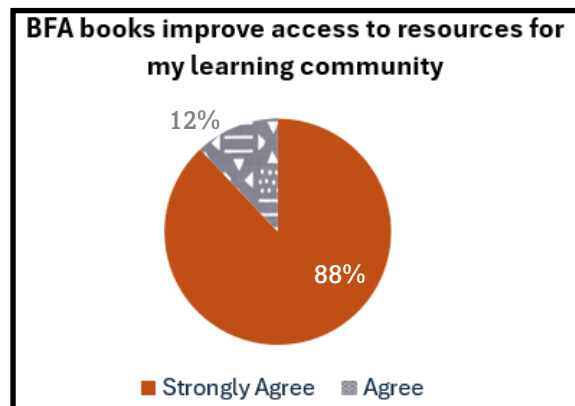
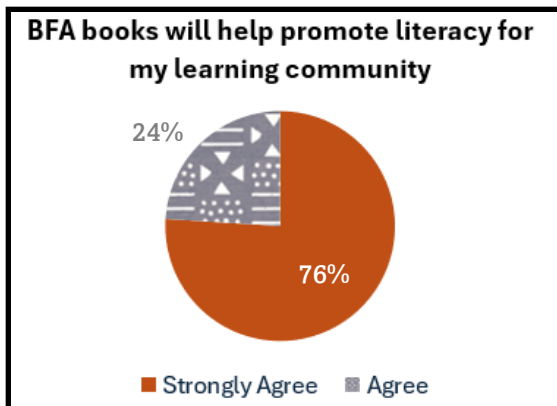
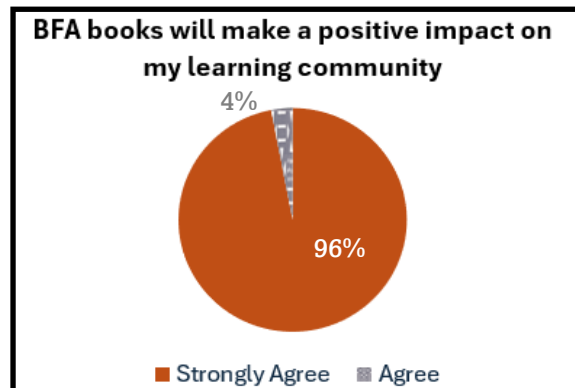
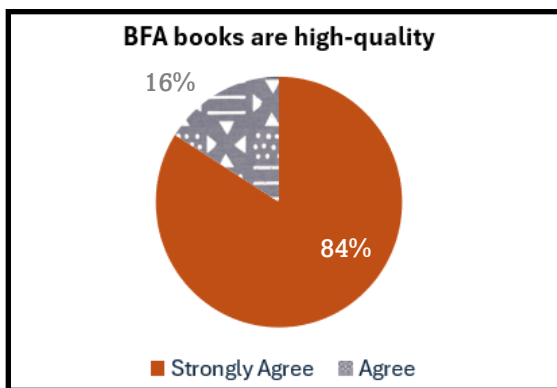


25 Book Recipients

Responded to our survey

14 Countries

DRC, Equatorial Guinea, Ethiopia, Kenya, Lesotho, Malawi, Nigeria, Sierra Leone, Somalia, South Africa, South Sudan, Tanzania, The Gambia, Uganda

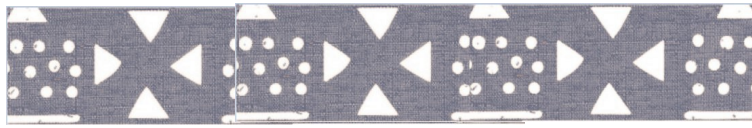


76%

of respondents reported that library usage has increased since receiving their shipment

98%

of books, on average, were deemed relevant (appropriate for age, subjects, and culture)

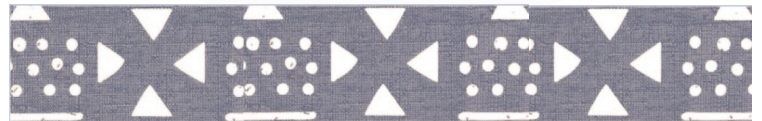


What were the top categories shipped this year?



science
 reference books
 business & economics
 leisure reading
 girls empowerment collections
 English reading skills
 computers & e-readers
 medical

Where did the books go?



84% of respondents store their books in a library (the rest are stored in classrooms and offices)

760 average reported number of library visitors per week

80% of libraries allow patrons to take books home

10%-100% reported youth enrollment rates in school



Why send books to Africa?

Before receiving BFA books.....

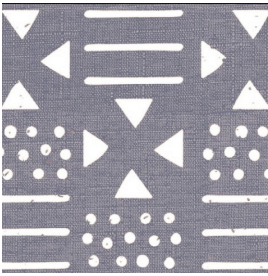
“The learning poverty rate is 94. Over 98% of schools in South Sudan do not have libraries.” - Garang Buk Buk, South Sudan

“Lack of books means limited imaginations and limited possibilities.” - Moving Windmills, Malawi

After receiving BFA books.....

“I am happy and excited that these books we received from you promote reading and culture in our community and empower students who want in the future to be good writers.” - Neema Masamba, form three student, Nyegina Secondary School, Tanzania

“The previous collection has received so much praise and been greatly appreciated such that I can't thank you all enough for putting it together!” - Wanjiku Francis, Libraries for Kids, Kenya



9 Years of Data

36 Countries



Since we began our annual feedback survey in 2016, we have heard from 314 recipients in 36 different countries.



- Botswana • Burkina Faso • Burundi • Cameroon • Central African Republic
- Democratic Republic of the Congo • Djibouti • Equatorial Guinea • Eswatini
- Ethiopia • Ghana • Guinea • Kenya • Lesotho • Liberia • Libya • Madagascar
- Malawi • Mozambique • Namibia • Niger • Nigeria • Rwanda • Senegal
- Sierra Leone • Seychelles • Somalia • South Africa • South Sudan • Tunisia
- Tanzania • The Gambia • Togo • Uganda • Zambia • Zimbabwe